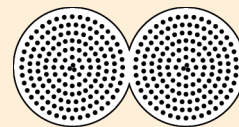
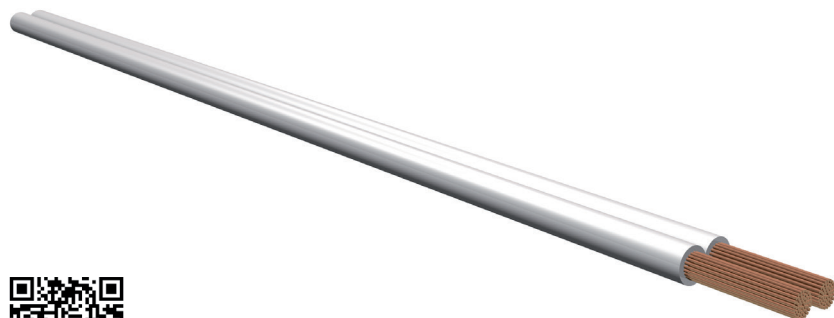


(H)03 VH-H

PVC twin cable

RoHS

CROSS SECTION



Acc. to VDE 0281

APPLICATION

For very low mechanical loads in households, kitchens, offices and for the connection of light electrical appliances. Not suitable for cooking and heating appliances.

SPECIAL FEATURES

Sheath colour
White, black

STRUCTURE

Conductor Flexible copper conductor according to VDE 0295 class 6
Insulation sheath According to VDE 0207 part 4 type Y12

TECHNICAL DATA

Nominal voltage 300 V
Test voltage 2000 V
Maximum permissible operating voltage in rotary-phase and single-phase alternating current systems U_o/U 330/330 V
Direct current systems U_o/U 495/495 V

Product description			Cu weight	Outer Ø (mm)	Weight (kg/km)	Product number
(H) 03VH-H	2x0.75	PVC twin cable	14.4	3.2 x 6.4	36	1041301