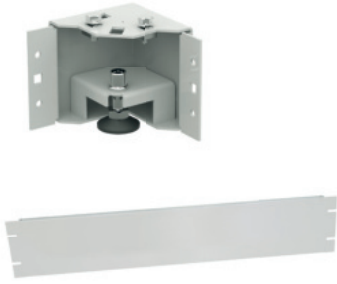


**Cabinet base for 42/33/24U**

Steel powder coated light gray ral7035

**Variants**

**Article number**



Base Corners  
HxBxT 100x100x100mm

WZ-2401-05-02-011

Board blind  
HxB 100x 400mm (für 600er Size)  
HxB 100x 600mm (für 800er Size)  
HxB 100x 800mm (für 1000er Size)

WZ-1982-03-05-011

WZ-1982-03-07-011

WZ-1982-03-08-011

**Fan only for stand cabinets**

**Variants**

**Article number**



with integradet Thermostat  
2-fach 320<sup>3</sup>/h PWD-2W 380x380, RAL 7035  
4-fach 640m<sup>3</sup>/h PWD-4W 380x380, RAL 7035

WN-0200-07-04-011

WN-0200-06-04-011

**19" Fan pattern for wall housing**

**Variants**

**Article number**



19" Insert Fan 2fach PW-1.2T  
19" Insert Fan 3fach PW-1.3T

WZ-5606-25-01-011

WZ-5606-05-01-011

**Single fan for wall housing**

**Variants**

**Article number**



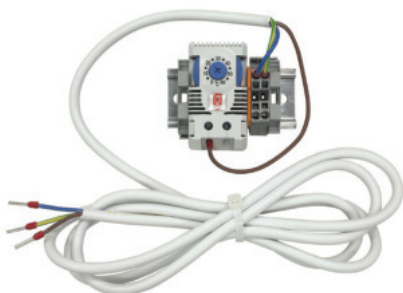
230V, 50Hz, 22W  
1-fach 165m<sup>3</sup>/h

WN-0200-04-00-000

**Thermostat for Fan pattern wall housing**

**Variants**

**Article number**



Setting range 1 - 60 ° C

WN-0201-12-00-000

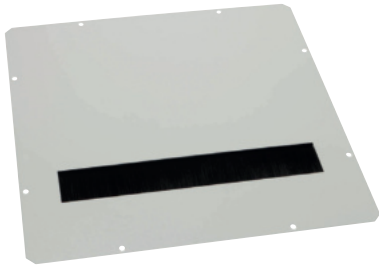
**Thermostat for Wall housing fan**

**Variants**

**Article number**

Setting range 1 - 60 ° C

WN-0201-02-00-000/A



**Roof, floor panel for stand cabinets**

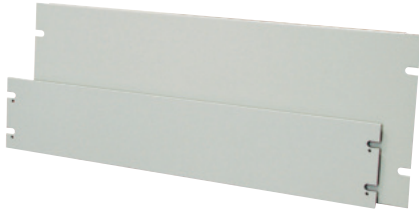
Steel sheet light gray RAL 7035

**Variants**

with brush bar	380x380mm
Tin Use closed	380x380mm
Tin Use closed	210x380mm

**Article number**

WZ-5271-10-00-011
WZ-1718-38-01-011
WZ-1718-38-02-011



**Blind plates 19"**

**Variants**

1U Blindplate 19"
2U Blindplate 19"
3U Blindplate 19"

**Article number**

WZ-SB00-33-01-011
WZ-SB00-33-02-011
WZ-SB00-33-03-011



**Implementation plate 19"**

**Variants**

1U Implementation plate without a support plate with brushes
1U Implementation plate with a support plate with brushes

**Article number**

WZ-SB63-00-01-011
WZ-SB63-00-02-011



**Crossing plate 19"**

**Variants**

1U with 5 cable bracket metal
1U with 5 cable brackets Plastic rotatable

**Article number**

65100058
WNK-811-100



**Cabinet light 19"**

**Variants**

1U with 1.5m connection cable and on/out switch
---

**Article number**

WN-0208-01-011-01
-------------------

Door contact switch with connection cable
---

WN-0208-04-05-000
-------------------



**Perforated floor 2U**

25kg Load

**Variants**

2U 250mm depth  
2U 350mm depth

**Article number**

WZ-SB00-49-05-011  
WZ-SB00-49-04-011



**Perforated floor 1U**

Assembly front and back  
150kg load

**Variants**

1U variable depth von 500-900mm  
0,5U variable depth von 550-650mm  
0,5U variable depth von 450-550mm

**Article number**

WZ-3074-83-00-011  
WZ-8264-80-04-550-011  
WZ-8264-80-03-450-011



**Universal drawer 1U**

**Variants**

1U with lock 400mm deep for keyboard  
2U with lock 465mm deep for documents

**Article number**

WZ-SB78-00-04-011  
WZ-SB67-00-00-011



**Perforated floor extendable 2U**

**Variants**

2U 355mm deep, fastening only at the front  
20kg of loads moved out  
1U 555mm deep, fastening at the front and rear  
25kg of loads moved out

**Article number**

WZ-5841-14-04-011  
WZ-5841-01-011



**Perforated floor extendable 2U**

140kg load

**Variants**

2U only for 1000mm deep cabinets

**Article number**

WZ-5841-08-00-011



**Cabinet connector**

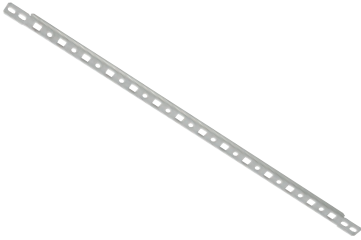
4 connectors are needed to in line 2 cabinets

**Variants**

connectors with nuts and washers

**Article number**

WZ-SB25-00-00-000



**Cable fastening rail**

**Variants**

for Stand cabinets

**Article number**

WZ-SB00-28-01-000



**Cable bracket**

for the assembly on the 19" frame  
Steel, chrome-plated, 1VPE = 5 pieces

**Variants**

BxT 88x88mm

**Article number**

WZ-SB54-00-01-000



**Rols Typ300 für Stand cabinets**

**Variants**

Role with roller lock, steerable  
Role without a rolling lock, not steerable

**Article number**

WZ-SB73-00-01-000  
WZ-SB73-00-02-000



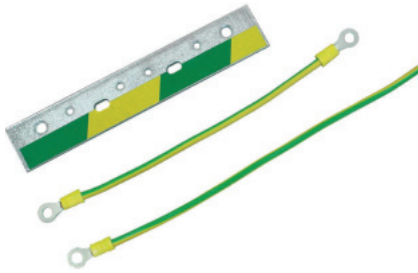
**Support plate for roles TYP300**

**Variants**

for 600mm wide  
for 800mm wide

**Article number**

WZ-SB74-00-01-000  
WZ-SB74-00-02-000



**Wall housing ground set**

Steel rail galvanized, 170x30x4mm

**Variants**

Consisting of grounding rail, line, screw and slices

**Article number**

WZ-2733-13-00-000



**Power Outlet Strip 19" from Aluminium**

various versions, with and without switches, with and without overvoltage protection, supply line 2m with Schukostecker 16a 3600watt

**Variants**

- 8 times with switch
- 9 times without switch
- 6 times without switches, with ÜSS and fine protection
- 5 times with switch, with ÜSS and fine protection
- 8 times without switches, with ÜSS
- 7 times with switch, with ÜSS

**Article number**

- 13353400
- 13353401
- 13353402
- 13353403
- 13353404
- 13353405



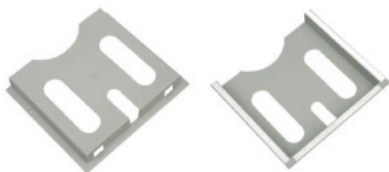
**Vertical dust protection panel for 42HE Cabinets**

**Variants**

Vertical blind cover with cable flower and Openings for cable guidelines  
For cupboards with a width of 800mm  
Light gray RAL 7035, 1 set = 2 pieces

**Article number**

WZ-5367-30-011



**Circuit diagram bag Din A4**

**Variants**

Circuit diagram bag with adhesive tape

**Article number**

WZ-SB00-40-00-011

**Brush bar**



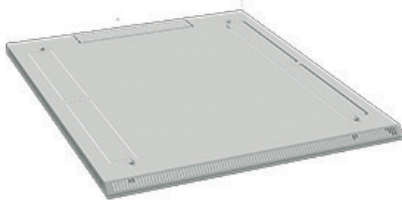
**Variants**

380mm long  
250mm long  
244mm long for Z-Cube Wall housing

**Article number**

WZ-8059-54-00-000  
WZ-3504-22-00-000  
WZ-8180-19-00-000

**Roof for Network cabinet**



**Variants**

As an additional equipment of the cabinet as well as for covering the ventilation openings in the roof plate. Increases the total cabinet height by 40 mm.

material  
Steel sheet, powder -coated in RAL 7035.

Scope of delivery  
Roof with fastening accessories.

Dimensions  
600x 800mm  
800x 800mm  
800x1000mm

**Article number**

WZ-8059-50-6080-011  
WZ-8059-50-8080-011  
WZ-8059-50-8010-011

**Base Model WZ-6935 for 42/33/24U Cabinets**

**Version steel sheet powder coated light gray ral7035**



**Variants**

Plinth corners Set 4 Pieces  
HxBxT 100x100x100mm  
  
Set of 4 plinth levelling bolts  
  
Solid side pane  
  
HxB 100x 600mm (für 800er Maß)  
HxB 100x 800mm (für 1000er Maß)

**Article number**

WZ-6935-74-00-011  
WZ-6935-Z1-02-000  
  
WZ-6935-46-03-011  
WZ-6935-46-02-011

