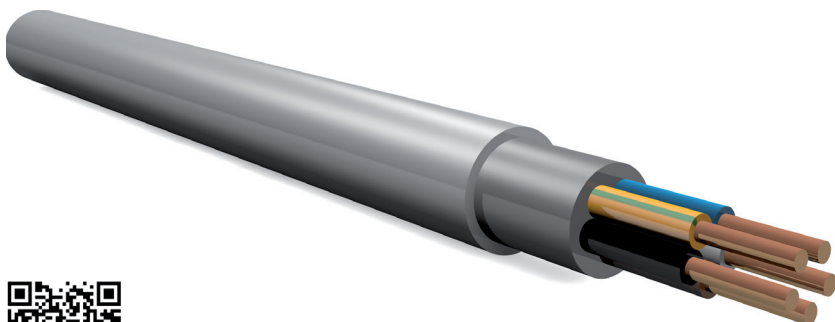


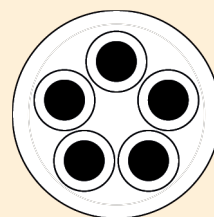
# NI2XY

Power cable 0.6/1kV



RoHS

## CROSS SECTION



Acc. to VDE 0262

## APPLICATION

For fixed installation in dry, damp and wet rooms, as well as in brickwork and for directly embedding in shake, vibrated or tamped concrete. The cables are also suitable for outdoor installation. They must not be buried underground or in water. They are primarily used in industrial plants and the chemical industry. Flame retardant according to EN 50265-2-1

## SPECIAL FEATURES

Sheath colour  
Grey

## STRUCTURE

- Conductor** Copper conductor, bare, single-cored class 1
- Cores** VPE insulation  
Colour-coded
- Outer sheath** PVC, grey, flame retardant according to EN 50265-2-1

## TECHNICAL DATA

- Nominal voltage** 600 V/1000 V
- Min. bending radius** 4 x outer diameter
- Permissible cable sheath temperature** Moving -5°C to +70°C
- Permissible max. conductor temperature** +90°C
- Permissible short circuit temperature** 250°C

Product description	Cu weight	Outer Ø (mm)	Weight (kg/km)	Product number
NI2XY - J 3x1.5 RE	43.0	9.0	123	106200315
NI2XY - J 3x2.5 RE	72.0	10.0	160	106200325
NI2XY - J 5x1.5 RE	72.0	11.0	168	106200515
NI2XY - J 5x2.5 RE	120.0	12.0	213	106200525